



PARKING: LONG TERM A

Closest long-term lot, walk to terminal or 5-minute shuttle ride.

Complimentary transportation from designated pick-up and drop-off shuttle stops is provided continuously between the terminal and long-term parking lots. Shuttle service begins at 3:30am daily and ends 45 minutes after the last flight arrives. Frequent shuttle service is available.

Handicapped parking is available in all airport lots. All airport operated shuttle buses in the long term and economy lots are equipped with wheelchair ramps for passenger assistance. Regular fees apply.

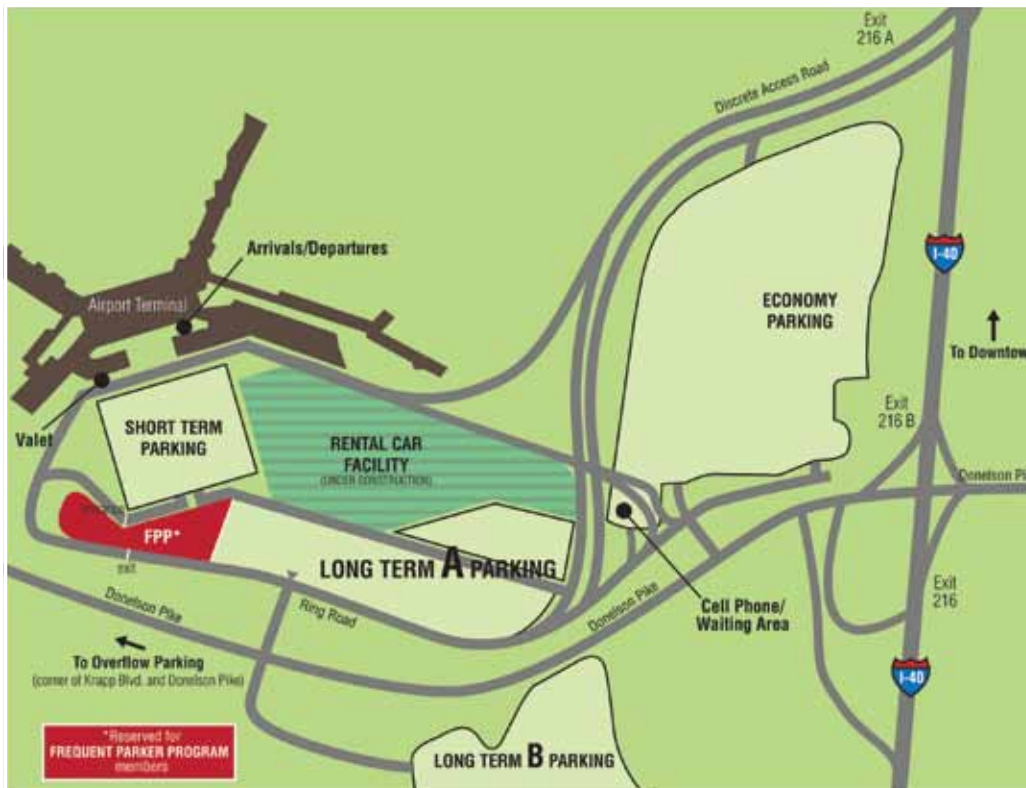
For More Than 24 Hours:
Maximum Rate is \$13.00 a day.

RATES

0-10 minutes	Free
10 min - 30 min	\$ 1.50
30 min - 1 hour 30 min	\$ 3.00
1 hour 30 min - 2 hours	\$ 6.00
2 - 3 hours	\$ 9.00
3 - 24 hours	\$ 13.00
Maximum per day	\$ 13.00

Payment:

The following methods of payment are accepted: Cash, Visa, Master Card, American Express, Discover, Diners Club, and local checks.



PARKING QUESTIONS? CONTACT CENTRAL PARKING AT (615) 275-1045

All information and rates are subject to change without notice. (PARK0311)



PARKING: LONG TERM B

Former overflow lot, plenty of spaces, shuttle ride to terminal (approx. 12 minutes).

Complimentary transportation from designated pick-up and drop-off shuttle stops is provided continuously between the terminal and long-term parking lots. Shuttle service begins at 3:30am daily and ends 45 minutes after the last flight arrives. Frequent shuttle service is available.

Handicapped parking is available in all airport lots. All airport operated shuttle buses in the long term and economy lots are equipped with wheelchair ramps for passenger assistance. Regular fees apply.

For More Than 24 Hours:
Maximum Rate is \$10.00 a day.

RATES

1 Hour	\$ 1.50
1 hour - 1 hour 30 min	\$ 3.00
1 hour 30 min - 2 hours	\$ 6.00
2 - 3 hours	\$ 9.00
3 - 24 hours	\$ 10.00
Maximum per day	\$ 10.00

Payment:

The following methods of payment are accepted: Cash, Visa, Master Card, American Express, Discover, Diners Club, and local checks.



PARKING QUESTIONS? CONTACT CENTRAL PARKING AT (615) 275-1045

All information and rates are subject to change without notice. (PARK0311)



PARKING: SHORT TERM

Two levels of parking, short walk to the terminal, first 20 minutes free.

The Short Term Parking Garage has two levels available for public parking use. It is located adjacent to the terminal facility. The overhead height clearance in the Short Term Parking Garage is 8'2".

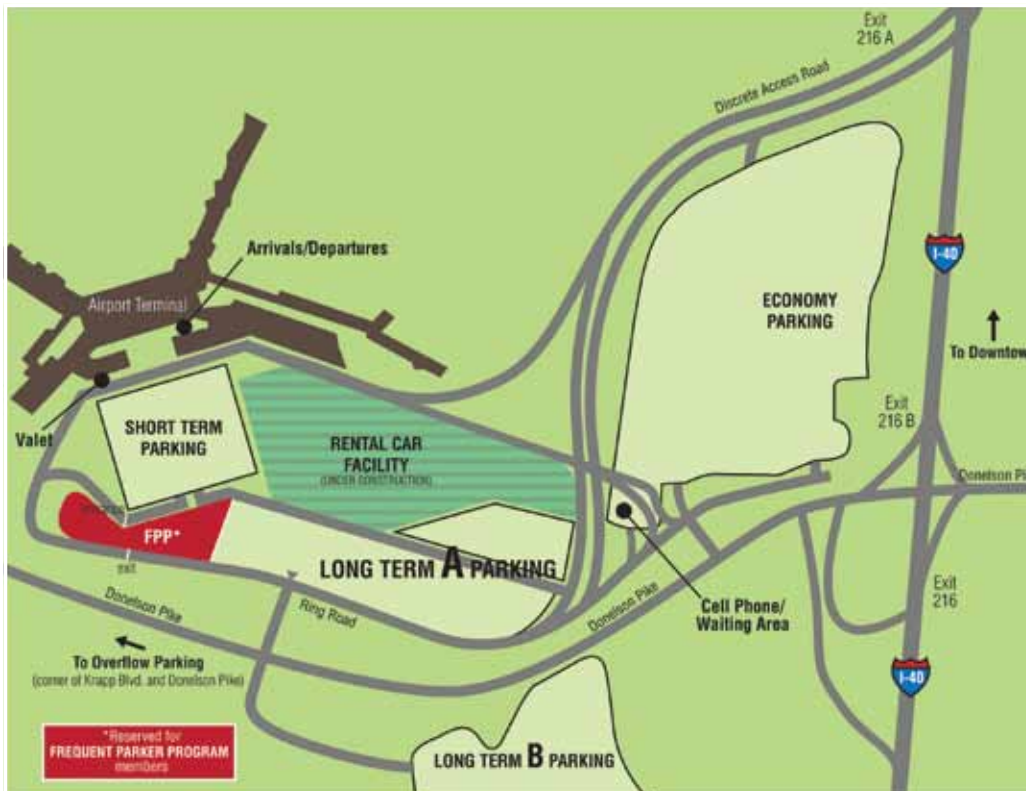
Handicapped parking is available in all airport lots. All airport operated shuttle buses in the long term and economy lots are equipped with wheelchair ramps for passenger assistance. Regular fees apply.

For More Than 24 Hours:
Maximum Rate is \$24.00 a day.

RATES

0-20 min.	Free
20 min-40 min	\$ 2.00
Each additional 20 min.	\$ 1.00
Maximum per day	\$ 24.00

Payment:
 The following methods of payment are accepted:
 Cash, Visa, Master Card, American Express,
 Discover, Diners Club, and local checks.



PARKING QUESTIONS? CONTACT CENTRAL PARKING AT (615) 275-1045

All information and rates are subject to change without notice. (PARK0311)



PARKING: ECONOMY

Most economical parking at BNA, access from Donelson Pike, shuttle ride to terminal (approx. 10 minutes).

Complimentary transportation from designated pick-up and drop-off shuttle stops is provided continuously between the terminal and long-term parking lots. Shuttle service begins at 3:30am daily and ends 45 minutes after the last flight arrives. Frequent shuttle service is available.

Handicapped parking is available in all airport lots. All airport operated shuttle buses in the long term and economy lots are equipped with wheelchair ramps for passenger assistance. Regular fees apply.

For More Than 24 Hours:
Maximum Rate is \$8.00 a day.

RATES	
0-1 hour	\$ 3.00
1-2 hours	\$ 8.00
Maximum per day	\$ 8.00

Payment:
 The following methods of payment are accepted:
 Cash, Visa, Master Card, American Express,
 Discover, Diners Club, and local checks.



PARKING QUESTIONS? CONTACT CENTRAL PARKING AT (615) 275-1045

All information and rates are subject to change without notice. (PARK0311)



PARKING: OVERFLOW

The Overflow Parking Lot is only open during seasons of increased air travel.

Complimentary transportation from designated pick-up and drop-off shuttle stops is provided continuously between the terminal and long-term parking lots. Shuttle service begins at 3:30am daily and ends 45 minutes after the last flight arrives. Frequent shuttle service is available.

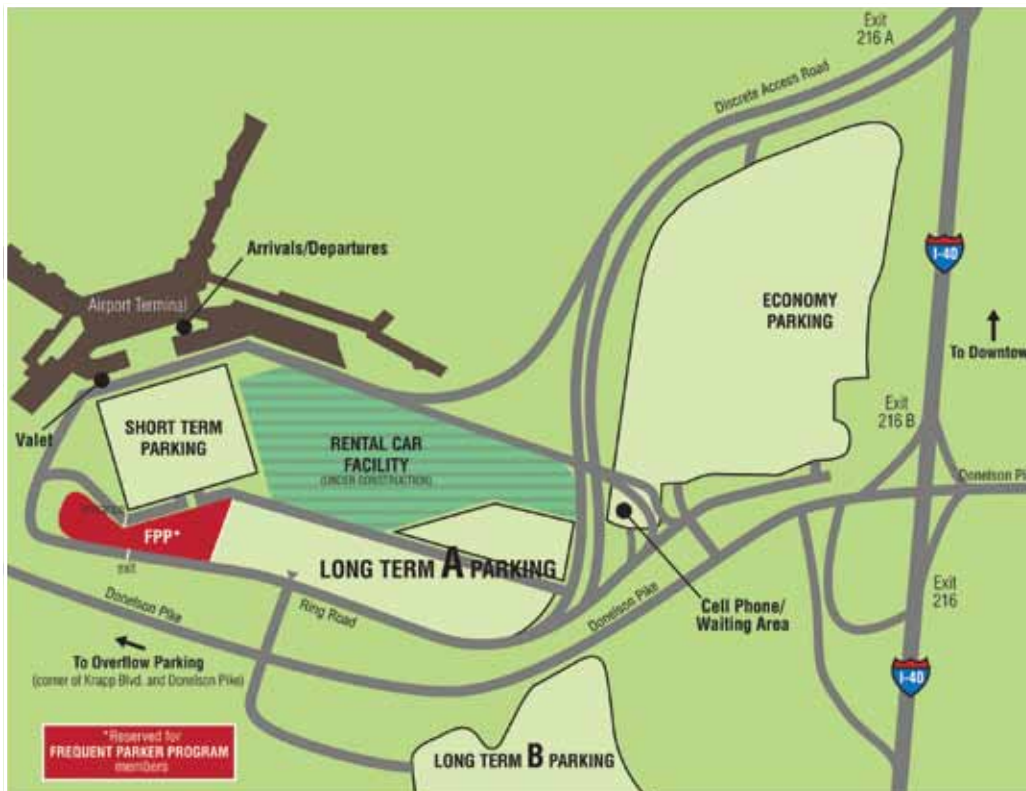
Handicapped parking is available in all airport lots. All airport operated shuttle buses in the long term and economy lots are equipped with wheelchair ramps for passenger assistance. Regular fees apply.

For More Than 24 Hours:
Maximum Rate is \$8.00 a day.

RATES

0-1 hour	\$ 3.00
1-2 hours	\$ 8.00
Maximum per day	\$ 8.00

Payment:
The following methods of payment are accepted: Cash, Visa, Master Card, American Express, Discover, Diners Club, and local checks.



PARKING QUESTIONS? CONTACT CENTRAL PARKING AT (615) 275-1045

All information and rates are subject to change without notice. (PARK0311)



SERVICES: FREQUENT PARKER PROGRAM

Fast Access to Parking, Points toward Free Parking

Fast access in and out of all parking lots, excluding the valet lot

Free parking, excluding in valet lot, with earned points

Convenient online payment

Earn Points toward Free Parking

You earn up to 11 points per dollar spent in all lots excluding valet.

- One free day in Short Term = 2640 points
- One free day in Long Term = 1200 points
- One free day in Economy = 960 points

You can earn points in any parking lot except for valet.

You may redeem your points for free parking in any lot, excluding valet.

How does it work?

Register for the program online at <https://fpp.flynashville.com>. The cost for the Frequent Parker pass is \$20. Some vehicles may require an alternate pass due to magnetic components within various windshields; the cost for this pass is \$60. All major credit cards are accepted.

IMPORTANT NOTE: Valet parking is excluded from this program.

A Frequent Parker pass, which gives you automatic entry/exit to BNA parking lots, will be sent to the member. This pass allows the driver to pull up to the designated entrance/exit lane and enter using the pass. The system will automatically charge the stay to the credit card provided at the time of sign-up.

Members may check their account status online at <https://fpp.flynashville.com>. Members can print receipts and view current points online at their convenience. They also can track the number of free days of parking accrued in each lot and select which day(s) they want to redeem their rewards.

Frequent parker members can earn up to 240 points for each daily maximum rate or eleven points per dollar spent in any of the airport's parking lots, excluding valet, and redeem points for free parking in any of the lots except for the valet lot. Once redemption day(s) are selected, members simply use their pass. The reward will be applied automatically.

Start earning reward points toward free parking today!

PLEASE NOTE: Since frequent parkers are already participating in a special parking program, they will not be eligible for other promotional offers for parking made by the Authority.

The Program has no predetermined termination date and may continue until such time as the MNAA decides to terminate the Program, at any time, with or without notice. Members will have six months from the date Program termination is announced to use any accumulated points. This means that, regardless of the amount you participate in the Program, your right to accumulate points and claim Rewards can be terminated.

The MNAA reserves the right to add, modify, delete or otherwise change any of the rules, procedures, conditions, or benefits pertaining to the Program at its sole discretion, with or without notice, even though changes may affect the value of points already accumulated.

PARKING QUESTIONS? CONTACT CENTRAL PARKING AT (615) 275-1045

All information and rates are subject to change without notice. (PARK0311)

MANAGED BY  **Central**
PARKING





SERVICES: VALET

Drop off your car curbside at the terminal. Call ahead when your flight lands to have it ready and waiting when you return.

Valet parking service operates from Ground Transportation Level. Directional signage on the airport roadways assist passengers in locating the area.

Major Service Points

- Service is available during all hours of flight activity, primarily between 5 a.m. and 12 a.m.
- Rates are \$22.00 per day* with a minimum of \$10.00 for 0-4 hours.
- Toll-free number for easy notification of any changes to travel itinerary: 1-877-4-VALET-1 (1-877-482-5381) or locally, 615-275-5381

Services include:

- Car wash services available
- Oil change service available

Amenities include:

- Coffee
- Water
- *The Wall Street Journal*
- *USA Today*
- Assistance with baggage to ticketing is available, upon request.
- Smarte Cartes available in the valet area to assist passengers with baggage.
- Passengers' vehicles are returned to the same valet area at the ground level upon receipt of claim ticket.
- Vehicles are stored in an uncovered lot. A single storage lot is available with 1,151 spaces.



SERVICES: CELL PHONE WAITING AREA

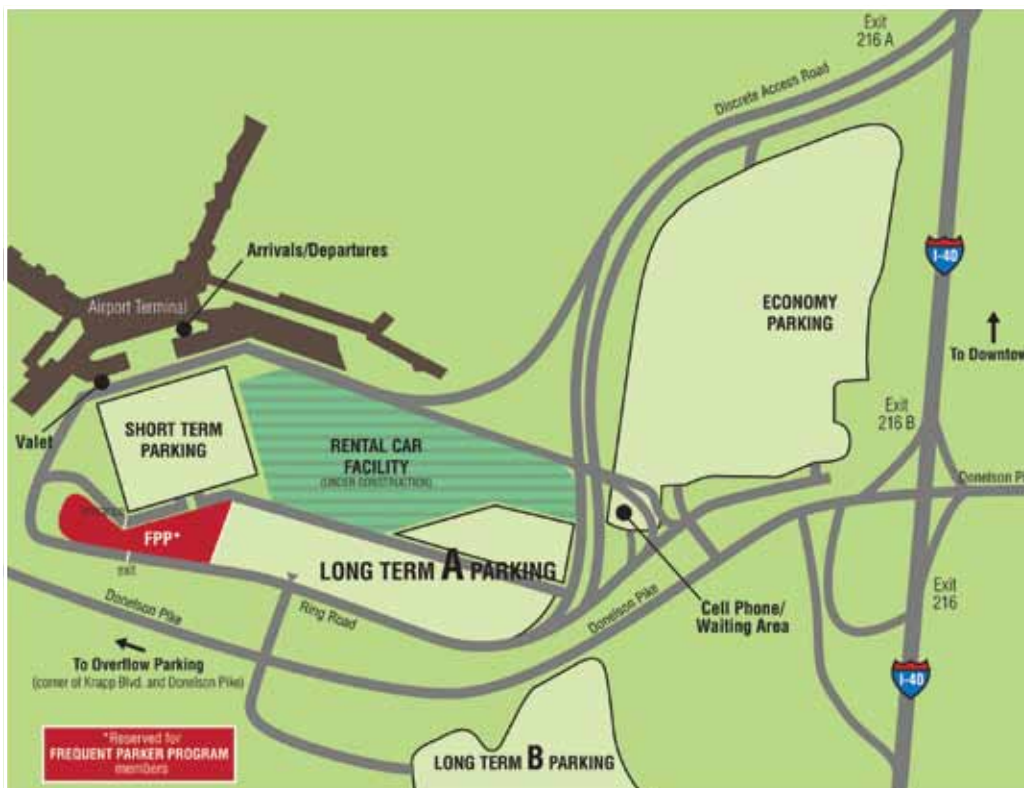
An expanded cell phone/waiting area is available for the convenience of drivers who are meeting passengers.

Real-time flight information monitors allow drivers to check the status of incoming flights.

ALTERNATE OPTIONS

for customers meeting arriving passengers include:

- Short-term parking garage
- 10-minute waiting area on baggage claim level



PARKING QUESTIONS? CONTACT CENTRAL PARKING AT (615) 275-1045

All information and rates are subject to change without notice. (PARK0311)



Nashville International Airport™

MAPS & DIRECTIONS

To the Airport from:

Downtown Nashville and Points West

Take Interstate 40 East to Exit 216A

South

Take Interstate 24 West to Interstate 40 East to Exit 216A or take Interstate 65 North to Interstate 440 East to Interstate 40 East to Exit 216A

North

Take Interstate 65 South to Interstate 40 East to Exit 216A or Interstate 24 East to Interstate 65 South to Interstate 40 East to Exit 216A

East

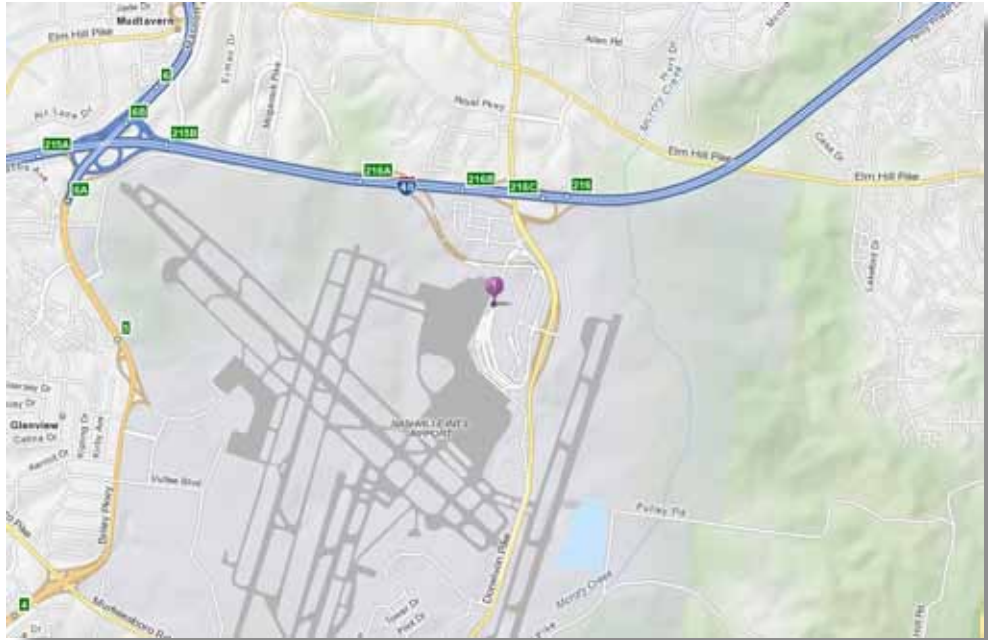
Take Interstate 40 West to Donelson Pike South to Exit 216 and turn left



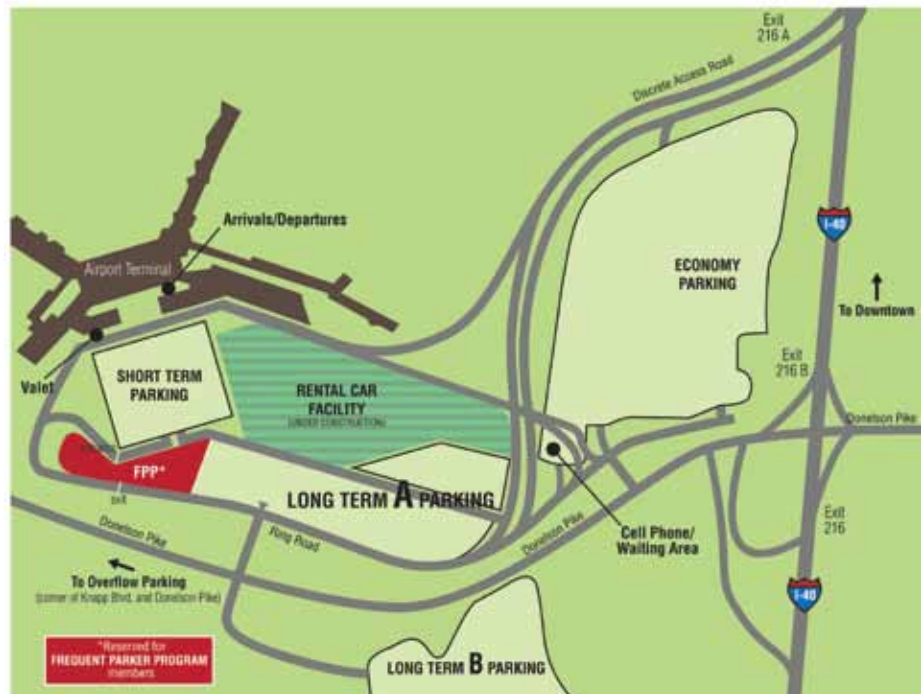
Nashville International Airport™

MAPS & DIRECTIONS

Area Map



Airport Parking Map



PARKING QUESTIONS? CONTACT CENTRAL PARKING AT (615) 275-1045

All information and rates are subject to change without notice. (PARK0311)